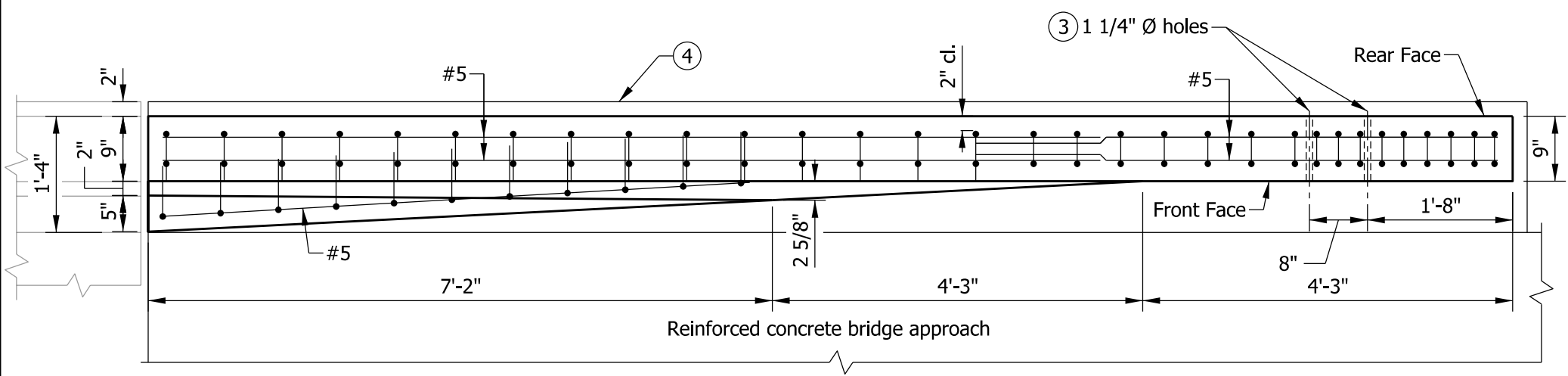


ELEVATION

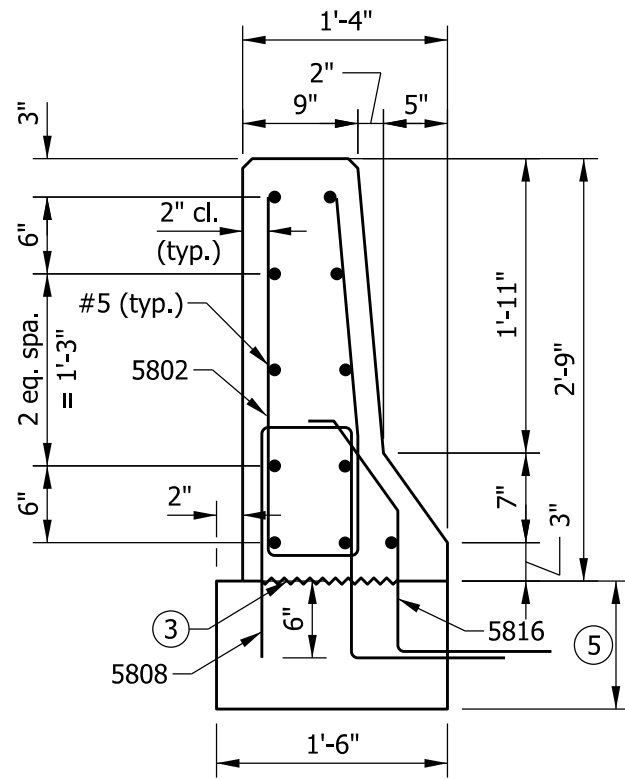


PLAN

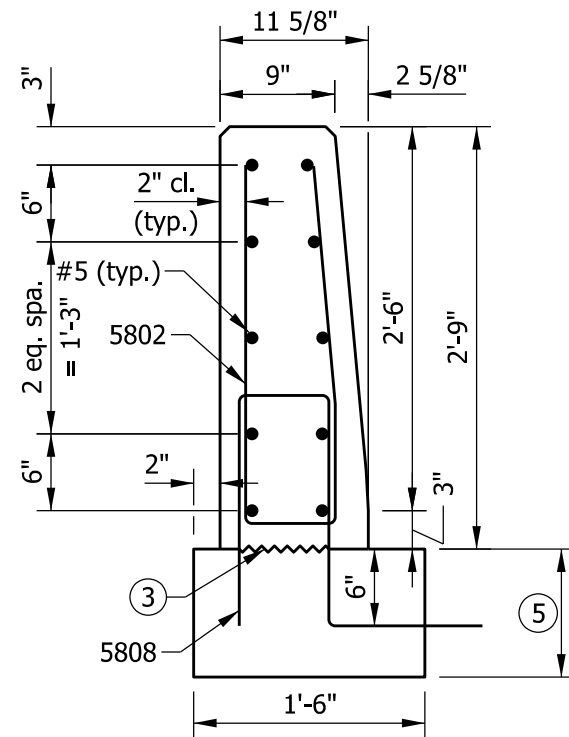
NOTES

1. See Standard Drawing E 706-TTFC-02 for sections.
2. See Standard Drawing E 706-TTFC-03 for reinforcing-bar diagrams and bill of materials.
- ③ Holes for attachment of guardrail transition type TGB. See Standard Drawing E 706-CBRT-04 for details.
- ④ RCBA extension for bridge railing transition type TFC. See Standard Drawing E 609-TBAE-01 for details.

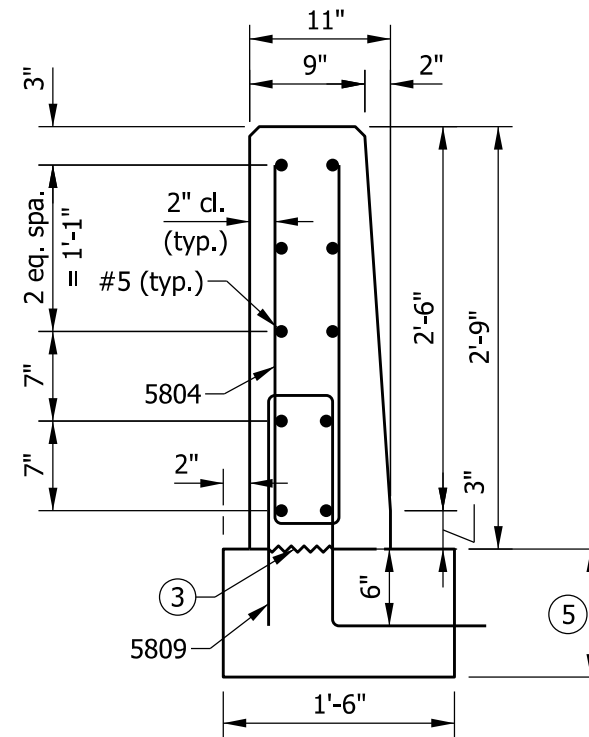
INDIANA DEPARTMENT OF TRANSPORTATION		
CONCRETE BRIDGE RAILING TRANSITION TFC PLAN AND ELEVATION SEPTEMBER 2013		
STANDARD DRAWING NO. E 706-TTFC-01		
	<i>/s/ Elizabeth W. Phillips</i>	02/04/13
	DESIGN STANDARDS ENGINEER	DATE
	<i>/s/ Mark A. Miller</i>	03/27/13
	CHIEF ENGINEER	DATE



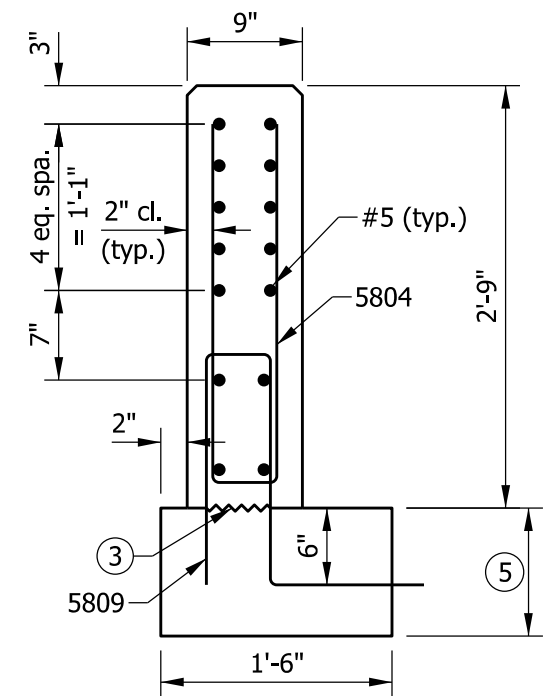
SECTION A-A



SECTION B-B



SECTION C-C



SECTION D-D

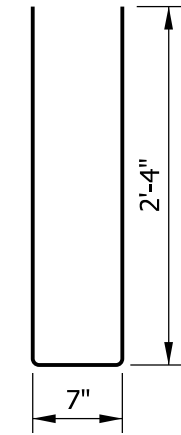
NOTES

1. See Standard Drawing E 706-TTFC-01 for elevation and plan.
2. All chamfered edges shall be 3/4".
- ③ Construction joint type A. See Standard Drawing E 702-CJTA-01 for details.
4. See Standard Drawing E 706-TTFC-03 for reinforcing-bar diagrams.
- ⑤ RCBA extension for bridge railing type TFC. See Standard Drawing E 609-TBAE-01 for details.

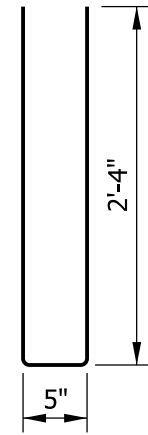
INDIANA DEPARTMENT OF TRANSPORTATION									
CONCRETE BRIDGE RAILING TRANSITION, TFC SECTIONS SEPTEMBER 2013									
STANDARD DRAWING NO. E 706-TTFC-02									
	<table style="width: 100%; border-collapse: collapse;"> <tr> <td style="width: 60%; border-bottom: 1px solid black;">/s/ Elizabeth W. Phillips</td> <td style="width: 40%; border-bottom: 1px solid black;">02/04/13</td> </tr> <tr> <td style="font-size: small;">DESIGN STANDARDS ENGINEER</td> <td style="font-size: small;">DATE</td> </tr> <tr> <td style="border-bottom: 1px solid black;">/s/ Mark A. Miller</td> <td style="border-bottom: 1px solid black;">03/27/13</td> </tr> <tr> <td style="font-size: small;">CHIEF ENGINEER</td> <td style="font-size: small;">DATE</td> </tr> </table>	/s/ Elizabeth W. Phillips	02/04/13	DESIGN STANDARDS ENGINEER	DATE	/s/ Mark A. Miller	03/27/13	CHIEF ENGINEER	DATE
/s/ Elizabeth W. Phillips	02/04/13								
DESIGN STANDARDS ENGINEER	DATE								
/s/ Mark A. Miller	03/27/13								
CHIEF ENGINEER	DATE								

NOTE

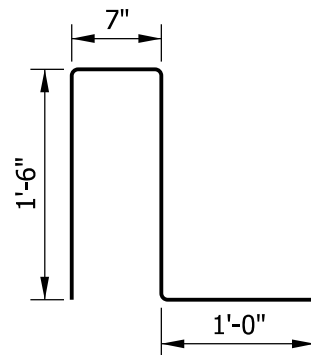
1. See Standard Drawing E 703-BRST-01 for reinforcing-bar bending details and notes.



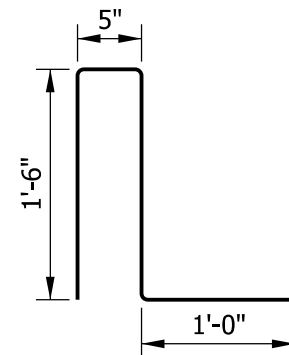
5802 x 5'-3"



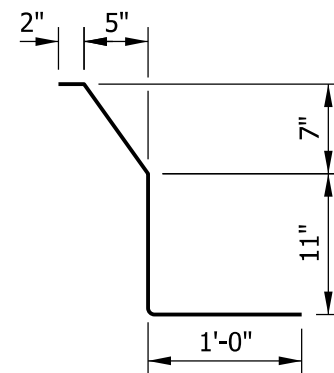
5804 x 5'-1"



5808 x 4'-7"



5809 x 4'-5"



5816 x 2'-10"

BILL OF MATERIALS

Quantities are for one concrete bridge railing transition type TFC

EPOXY-COATED REINFORCING STEEL

MARK OR SIZE	NO. OF BARS	LENGTH	WEIGHT
5802	12	5'-3"	
5804	19	5'-1"	
5808	12	4'-7"	
5809	19	4'-5"	
5816	11	2'-10"	
#5	10	10'-9"	
#5	1	6'-9"	
#5	14	6'-0"	

Total Epoxy-Coated Reinforcing Steel 551 LBS

MISCELLANEOUS

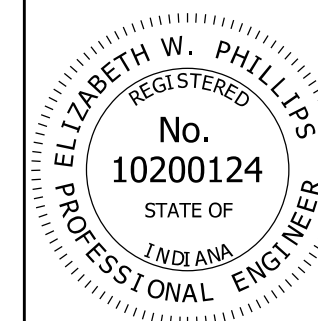
Concrete, Class C	1.2 CYS
Surface Seal	100 SFT

INDIANA DEPARTMENT OF TRANSPORTATION

**CONCRETE BRIDGE RAILING
TRANSITION, TFC**

SEPTEMBER 2013

STANDARD DRAWING NO. E 706-TTFC-03



/s/ Elizabeth W. Phillips 02/04/13

DESIGN STANDARDS ENGINEER DATE

/s/ Mark A. Miller 03/27/13

CHIEF ENGINEER DATE